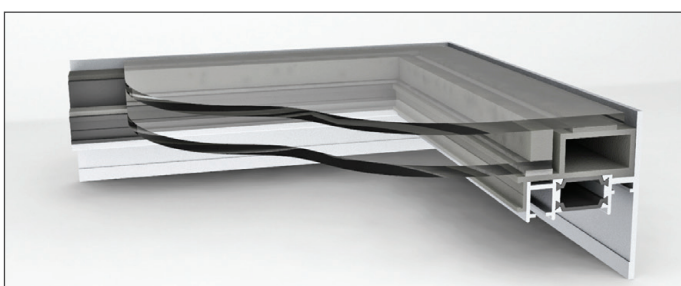
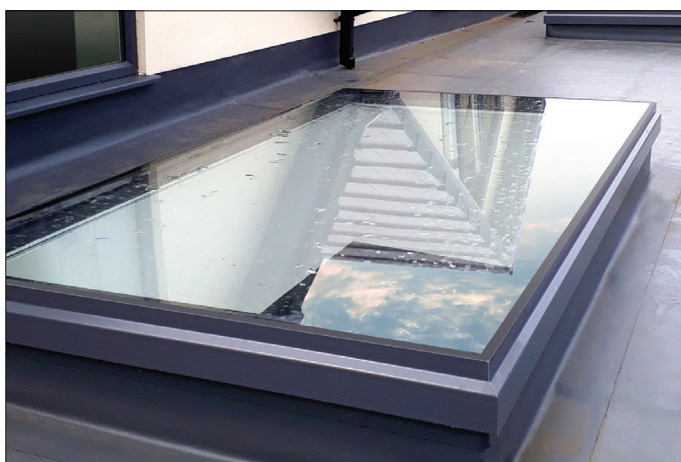
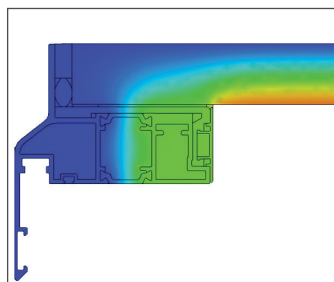
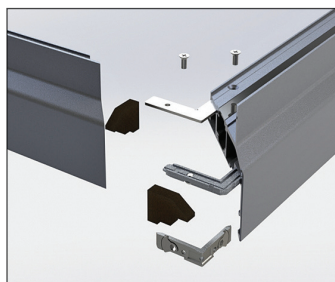


Technical Specification

Flat Rooflight System



Ideal for installation in homes and public buildings our Flat Rooflight System offers the opportunity to bring light into living.

Innovative and practical the made to measure Flat Rooflight has been designed to be fabricator friendly and easy to assemble.

Built bespoke to the size of the opening, using the slim profile, the frame is easy to assemble on sight, making transportation efficient.

Design Options

- Fixed - standard or walk-on
- Ventilation
- Egress

Design Features

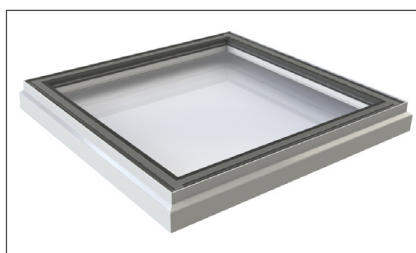
- Stepped edge unit
- Flush edge unit
- Minimal glazing bars
- Narrow sightlines
- Dual colour powder coating
- Removeable PCV cassette
- Thermally efficient
- Rafter Bar option available for longer runs of fixed glazing

TECHNICAL SPECIFICATION

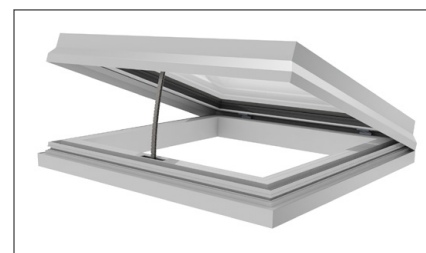
Application	Residential new build, refurbishment and light commercial.	
	28.4mm unit	30.8mm unit
Maximum width	1100mm	1500mm
Maximum length	2500mm	2600mm
Glazing options	28.4mm double glazed unit	30.8mm double glazed unit
Jointing	Mechanical	
U-Value	1.2 W/m ² K (based on fixed version with IGU centre pane 1.1 W/m ² K. & upstand 1250mm x 1250mm)	
Finishes	<p>Mill finish.</p> <p>Etched and anodised Silver AA25 or colours on request.</p> <p>Polyester powder coat paint. See separate list for standard colour range available.</p>	
Single or dual colour profiles	Option.	
Design standards	<p>BS EN 12020-2:2001 Aluminium and aluminium alloys, extruded precision profiles.</p> <p>BS 3987:1991 Specification for anodic oxide coatings.</p> <p>BS EN 12206-1:2021 Paints and varnishes, coating of aluminium and aluminium alloys</p>	



Walk-on rooflight



Fixed rooflight



Ventilation rooflight



Egress rooflight



KESTREL
ALUMINIUM SYSTEMS

Kestrel Aluminium Systems Ltd., 180 Rupert Street, Aston, Birmingham, B7 5DT

Tel: **0121 333 3575** • Fax: **0121 333 5335** • Email: **info@kestrelaluminium.co.uk** • **www.kestrelaluminium.co.uk**



We operate a continuous development programme and we reserve the right to amend specification without prior notification. Please contact the technical department for further information. All copyright, trademarks and registered design rights for the products detailed in this brochure are the property of Kestrel Aluminium Systems Ltd.

